
USER MANUAL

**MODEL NUMBER:
X-PUPF-0.4G**

0.4G (1.5L) Compact Pump-Up Foam Unit

English (Original Instructions)

READ ALL INSTRUCTIONS BEFORE OPERATING EQUIPMENT



WARNING



Read this manual completely and understand the machine before operating or servicing it.

- Read all instructions before installing or operating unit.
- Always wear appropriate personal protective equipment (PPE) when operating or servicing unit.
- Always follow all chemical safety precautions and handling instructions provided by the chemical manufacturer and Safety Data Sheet (SDS).
- If this unit is modified or serviced with parts not listed in this manual, the unit may not operate correctly.
- Never point the discharge wand at yourself, another person, or any object you do not want covered in chemical.
- Never leave unit unattended while pressurized.
- Always depressurize unit before attempting to remove the pump assembly.
- Always depressurize unit after use (as described in the After Use Instructions). Always store unit depressurized.
- Do not pressurize unit by any means other than the built-in pump assembly.
- Do not modify or remove pressure relief valve. Do not use unit if pressure relief valve is not operational.
- Always flush the unit with fresh water when switching from an alkaline to an acid or an acid to an alkaline.
- Always carry unit by the carrying handle. Never lift or carry the unit by the pump handle or the wand.
- Never use unit with hydrocarbons or flammable products.
- Do not exceed a fluid temperature of 100°F (37°C).

PROTECT THE ENVIRONMENT

Please dispose of packaging materials, old machine components, and hazardous fluids in an environmentally safe way according to local waste disposal regulations.



Always remember to recycle.

*Specifications and parts are subject to change without notice.

REQUIREMENTS

Liquid temperature range	40-100°F (4.4-37°C)
Chemical compatibility	Chemical products used with this equipment must be formulated for this type of application and compatible with unit materials and pump seals. For more information on chemical compatibility, consult the manufacturer or SDS for your product or contact our customer service department.

SPECIFICATIONS

Power type	Manual
Chemical pickup type	Draws from pre-mixed solution
Number of products unit can draw from	One product
Operating Capacity	0.3 gallon (1.1 liter)
Discharge wand/tip type	Polypropylene trigger handle with 110 degree fan tip
Output distance	1-2 ft (0.3-0.6 m)
Pump seals	Viton

READ ALL INSTRUCTIONS BEFORE OPERATING EQUIPMENT

Operation Instructions:

1. Ensure all air pressure is released from unit by activating the pressure release valve (located on the side of the pump assembly (LC-PA-F1.5L)).
2. Securely hold the unit and unscrew the pump assembly (LC-PA-F1.5L) from the tank in a counter-clockwise motion.
3. Follow all instructions from chemical manufacturer. Fill tank 3/4 of the way with pre-mixed solution. (Note: Do not overfill tank with solution.)
4. Securely hold the tank and screw the pump assembly (LC-PA-F1.5L) back on in a clockwise motion.
5. Pressurize the tank by pumping approximately 20 to 25 times, or until it become difficult to pump. (Note: The pressure relief valve will leak if the air pressure is too high. Do not overfill tank with air.)
6. To start foaming, point the wand assembly at the area you wish to foam and press down on the On/Off control to discharge foam. Release On/Off control to stop foaming.
7. For drain applications, position drain attachment over the drain or insert plug into drain. To start foaming, point the wand assembly at the area you wish to foam and press down on the On/Off control to discharge foam. Release On/Off control to stop foaming.

After Use Instructions:

1. Release air pressure from unit after each use by activating the pressure release valve (located on the side of the pump assembly (LC-PA-F1.5L)).
2. It is recommended to always empty out remaining solution and run fresh water through the unit to rinse all parts thoroughly after each use and before storage.

Maintenance Instructions:

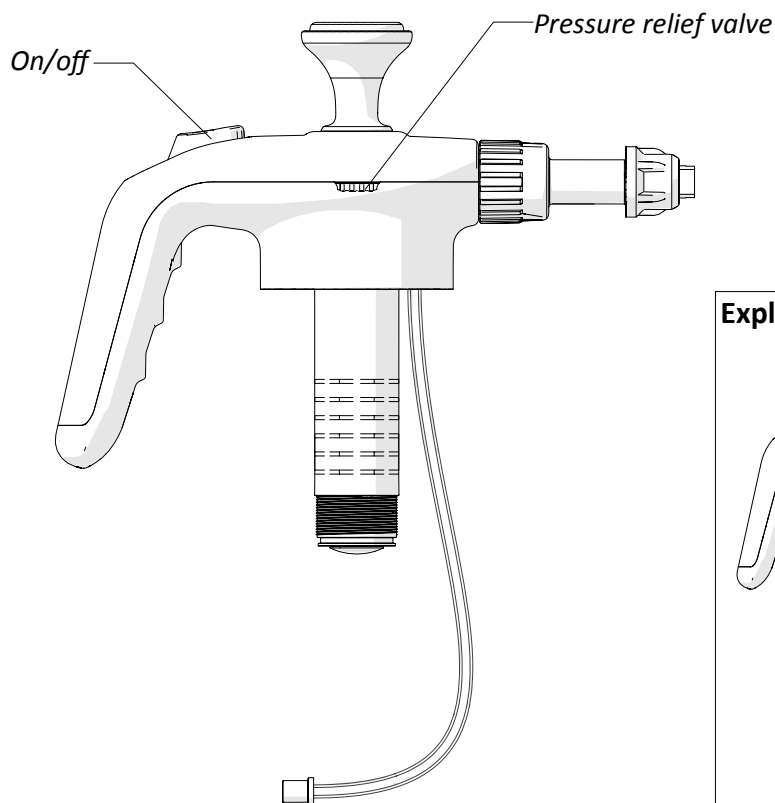
Warning: Always depressurize unit before performing maintenance.

To keep your unit operating properly, periodically perform the following maintenance procedures:

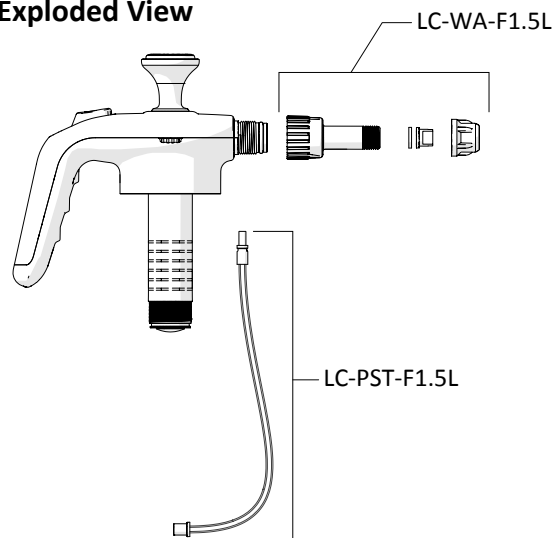
- Check the pump assembly for wear and leaks.
- Check the suction tube and screen for debris and clean as needed.
- Replace wadding (LC-WD) inside discharge wand as needed. Replace wadding by following steps below:
 1. Remove the discharge wand by unthreading retaining nut (LC-WA-RN).
 2. Remove the wadding (LC-WD) inside the discharge wand and discard.
 3. Insert new wadding disks inside the discharge wand.
 4. Thread the retaining nut back on. Make sure the o-ring (LC-WA-OR) is in place.
- Periodically lubricate the pump seal with a food safe lubricants. To lubricate the pump seal, raise pump handle and apply 5 to 10 drops of food safe lubricant between pump and pump sleeve. NEVER USE LUBRICANTS SUCH AS WD40.

READ ALL INSTRUCTIONS BEFORE OPERATING EQUIPMENT

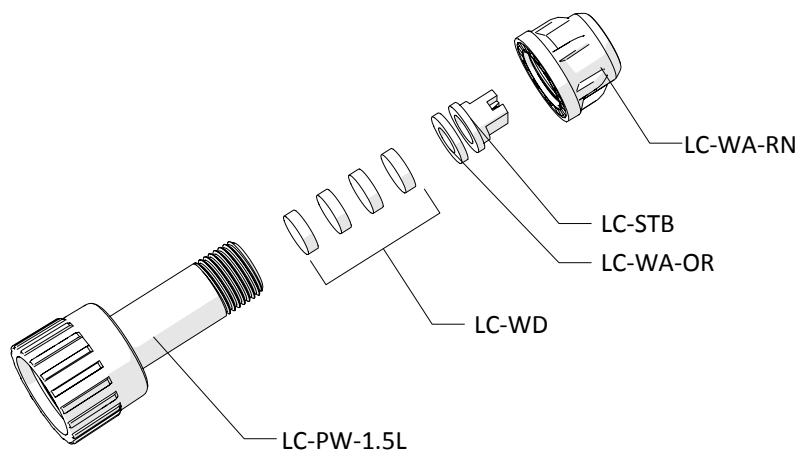
PUMP ASSEMBLY ITEM NUMBER: LC-PA-F1.5L



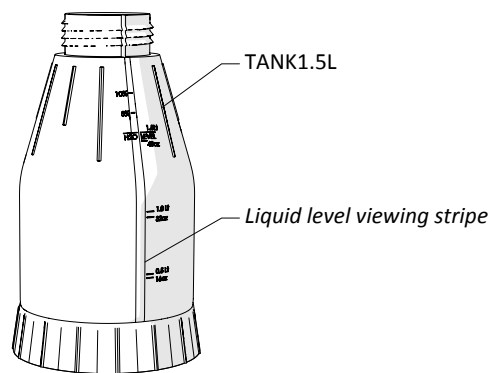
Exploded View



WAND ASSEMBLY: ITEM NUMBER: LC-WA-F1.5L



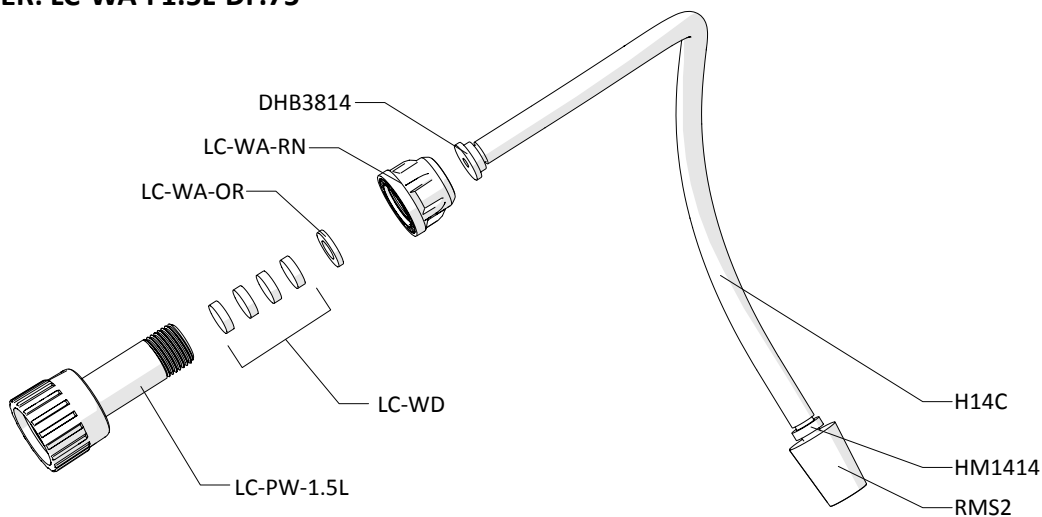
TANKS ITEM NUMBERS: TANK1.5L



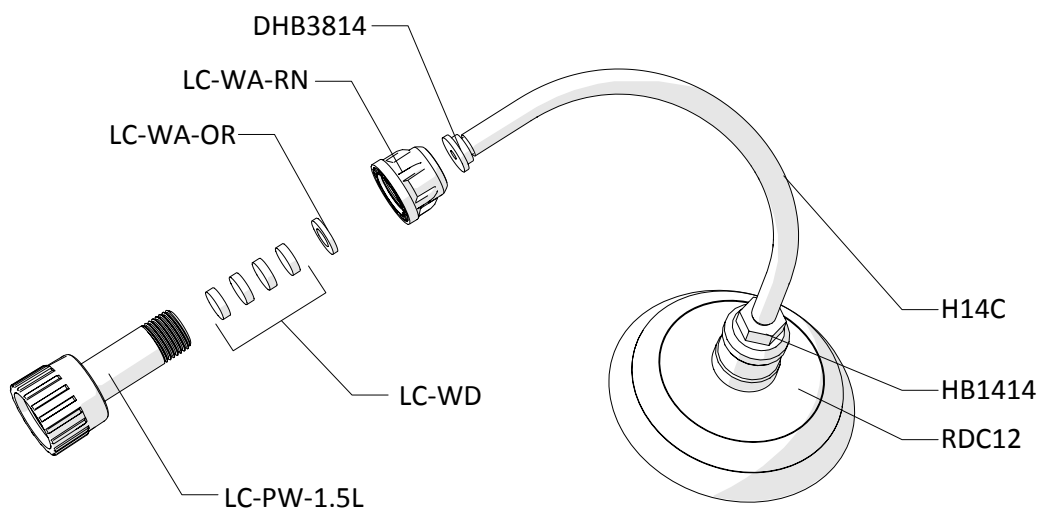
READ ALL INSTRUCTIONS BEFORE OPERATING EQUIPMENT

FOR UNITS WITH DRAIN ATTACHMENTS:

ITEM NUMBER: LC-WA-F1.5L-DP.75



ITEM NUMBER: LC-WA-F1.5L-DP3.75



ITEM NUMBER	DESCRIPTION
DHB3814	3/8 FLAT SEAT 1/4 HOSE BARB
H14C	1/4in ID CLEAR POLYVINYL TUBING - Available per ft. (3/8 in OD)
HB1414	1/4in MPT X 1/4in HOSE BARB
HM1414	HOSE MENDER - 1/4 inch BARB X 1/4 inch BARB
LC-PA-F1.5L	PUMP ASSEMBLY FOR 1.5L FOAM UNIT
LC-PW-1.5L	POLY WAND FOR 1.5L PUMP UP
RDC12	RUBBER DRAIN CUP FOR 1/2 INCH BARB

ITEM NUMBER	DESCRIPTION
RMS2	RUBBER MOLDED STOPPER-SIZE #2-EPDM
LC-STB	BUTTON SPRAY TIP FOR 1.5L/5L
TANK1.5L	1.5L TANK-WHITE
TANK1.5LBK	1.5L TANK-BLACK
LC-WA-OR	O-RING IN 1.5L/5L WAND ASSEMBLY
LC-WA-RN	RETAINING NUT FOR 1.5L/5L WAND ASSEMBLY
LC-WD	WADDING DISK FOR 1.5L/5L (1 PIECE)