

Dilution™ SOLUTIONS

An Ingersoll Rand Business

To order call 1-800-451-6628

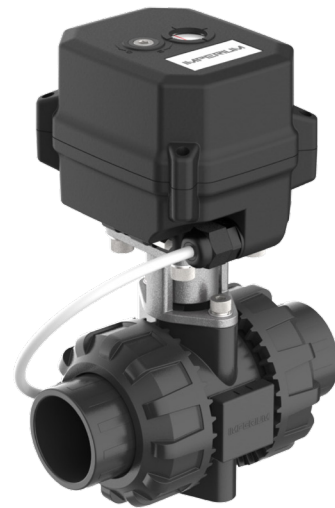
IMPERIUM PRO LINE BALL VALVES

SPECIFICATIONS

The **Imperium Pro Line Ball Valves** are a superior option for your automated irrigation system. Designed by cultivation and irrigation experts to provide you with the highest quality valves available in the market. They are purpose-built for irrigation systems at any scale.

FEATURES

Available in 5 sizes - 3/4" up to 2"
PVC valve body and interior for chemical and corrosion resistance
EPDM seals
Threaded and slip valve ends included
High temperature tolerance up to 131°F
High pressure up to 150 psi
Full port ball valve - no flow restriction
Can flow in either direction
Adjustable from normally closed to normally open
24V motor - AC & DC
Auto return capacitor
Built-in Allen wrench to manually open or close the valve



Description	Item #
Ball Valve Actuated PVC 3/4" FPT 2-way 24VAC 19.6" cable	IC75NCS24VAC
Ball Valve Actuated PVC 1" FPT 2-way 24VAC 19.6" cable	IC100NCS24VAC
Ball Valve Actuated PVC 1-1/4" FPT 2-way 24VAC 19.6" cable	IC125NCS24VAC
Ball Valve Actuated PVC 1-1/2" FPT 2-way 24VAC 19.6" cable	IC150NCS24VAC
Ball Valve Actuated PVC 2" FPT 2-way 24VAC 19.6" cable	IC200NCS24VAC